

# RELAX

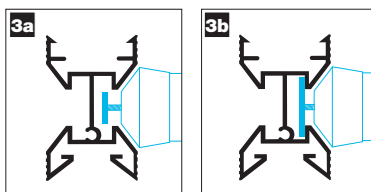
## FLOOR TO CEILING STANCHION

H2700mm

TOOLS REQUIRED:



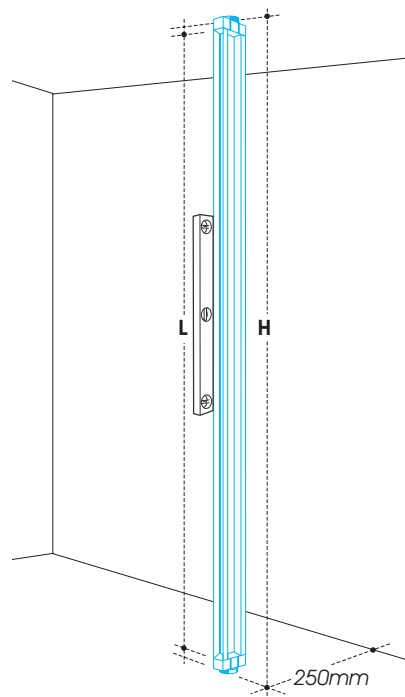
TOP TIP:



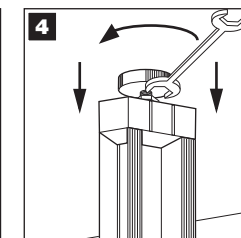
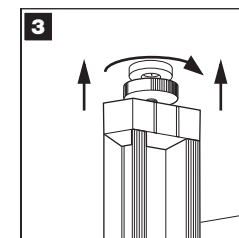
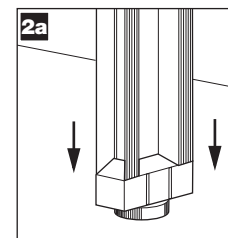
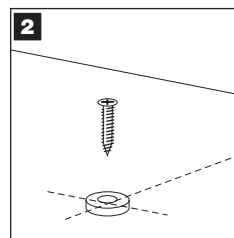
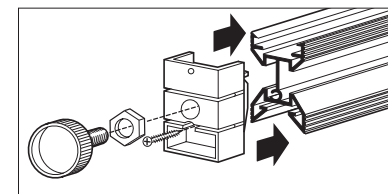
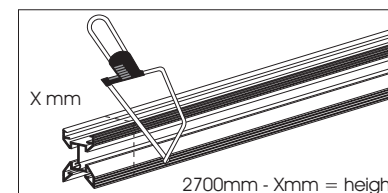
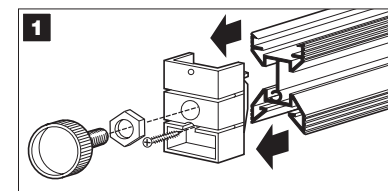
\* **Fitting to the Stanchions.** When attaching the brackets to the Stanchion ensure the washer, which sits within the Stanchion groove is rotated enough for a secure fitting (3a -3b).

### FLOOR TO CEILING STANCHION W2700mm

SSR-2020-106-AN



$H - 80mm = L$   
(ie:  $H2560mm - 80mm = L2480mm$ )



\* **Fitting onto of carpets.** When the system is in use the weight of garments and other items cause the Stanchion to sink into the carpet - at this point the ceiling screw cap (3 - 4) needs to be adjusted to ensure a secure fitting.

# RELAX

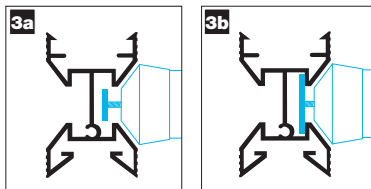
## FLOOR TO WALL STANCHION

H2240mm

TOOLS REQUIRED:



TOP TIP:



\* Fitting to the Stanchions. When attaching the brackets to the Stanchion ensure the washer, which sits within the Stanchion groove is rotated enough for a secure fitting (3a -3b).

### FLOOR TO WALL STANCHION W2240mm

SSR-2121-080-AN

